

Arlingford Road, Brixton, SW2

3 bedroom flat - conversion for sale

£685,000

Leasehold

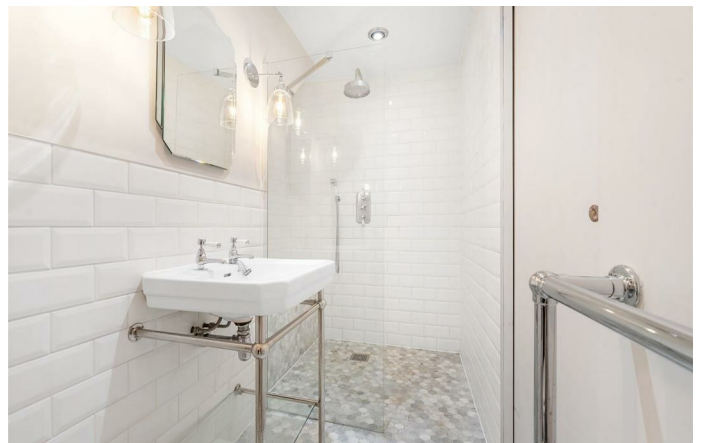
Property Details

This beautiful three-bedroom, split-level apartment is set within an end-of-terrace Victorian conversion and arranged over the upper floors, offering generous internal space and a blend of character and contemporary design. Accessed via the ground floor, stairs lead to a bright hallway and an impressive open-plan kitchen and reception room spanning the full width of the property, with two sash windows and café-style shutters allowing excellent natural light. Characterful features include built-in cabinetry, alcove shelving and a chimney breast with timber mantel. The shaker-style kitchen features navy cabinetry, sleek worktops, a central island and integrated appliances, with ample space for dining and seating. Also on this level is a stylish bathroom and a versatile third bedroom. Upstairs are two well-proportioned bedrooms, including a tranquil principal, plus a second bathroom with walk-in shower. Additional benefits include a skylight and a recently serviced boiler installed in 2020.

Features

- Three bedrooms
- Two bathrooms
- Victorian conversion
- Almost 1000 square feet of internal living space
- Split over various levels
- Characterful features
- Sought after street with an entrance onto Brockwell Park
- Walking distance to Brixton and Herne Hill town centres
- Victoria Line, Overground and Thameslink

Council tax band D EPC rating D (66)





Arlingford Road, Brixton, SW2

Arlingford Road, SW2
3 Bedroom House

APPROXIMATE GROSS INTERNAL AREA: **977 SQ FT / 91 SQ M**



While we try our very best, floor plans are produced as a guide only and we take no responsibility for the precise accuracy with which any property is represented.

Arlingford Road, Brixton, SW2

